

## Map Legend *(map on reverse)*

### Trailheads



hiking



hiking, mountain biking

### Trails

maintained

maintained, hiking only

0.24 approximate distance in miles between trail junctions

### Facilities

restrooms

parking area

boat launch

picnic shelter

baseball field

lacrosse field

open play field

play equipment

soccer field

### Publicly owned land

Big Finn Hill Park

other King County park land

other park or open space

### Other basemap features

incorporated city

unincorporated King County

wetland

arterial street

local street

gate

elevation contour (interval = 50 ft.)

February 2013

Map created by the King County Parks and Recreation Division and the King County GIS Center: [www.kingcounty.gov/gis](http://www.kingcounty.gov/gis).

Printed on recycled paper.

©2009, 2013 King County, Washington.

The information included on this map has been compiled by King County staff from a variety of sources and is subject to change without notice. King County makes no representations or warranties, express or implied, as to accuracy, completeness, timeliness, or rights to the use of such information. This document is not intended for use as a survey product. King County shall not be liable for any general, special, indirect, incidental, or consequential damages including, but not limited to, lost revenues or lost profits resulting from the use or misuse of the information contained on this map. Any sale of this map or information on this map is prohibited except by written permission of King County.

# Big Finn Hill Park

"Big Finn Hill Park is a 220-acre wooded oasis off of Juanita Drive. To the east of the road, the park offers soccer and baseball fields, a play area, and hiking trails. To the west, multi-use trails—frequented by mountain bikers, dog walkers, and hikers—wind and loop through a spectacular forest. With a variety of flora and terrain, recreationists occasionally spot deer, owls, hawks, and eagles."

*Denny Creek Neighborhood Alliance*

### Area

220 acres

### Total trail length

9.5 miles in Big Finn Hill Park and 7 miles in the adjoining Saint Edward State Park

### Trail uses

Hiking, mountain biking. Steep climbs in the north and south with moderate rolling terrain on the ridgetops.

### Access

The park is in northwest Kirkland, and the **park entrance** and parking lot is at Juanita Drive NE and NE 138th Street.

There is **trail access from the north** through Saint Edward State Park.

*King County's Parks and Recreation Division manages 25,000 acres of parks and natural lands, and provides over 300 miles of trails with year-round accessibility for hiking, mountain biking, trail running and horseback riding. Each trail offers a unique opportunity to walk, run or ride through the quiet beauty of our region's rich natural heritage.*

This information is available in alternative formats upon request. Please call 206-296-4232 or 1-800-325-6165 ext. 6-4232. Washington Relay Service: 1-800-833-6388.

For information about King County Parks, please call 206-296-4232.

Visit King County Parks on the Internet at [www.kingcounty.gov/parks](http://www.kingcounty.gov/parks).



King County

King County Parks **Your Big Backyard**

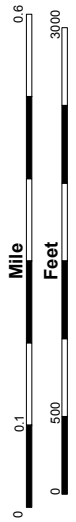
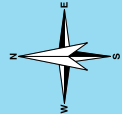
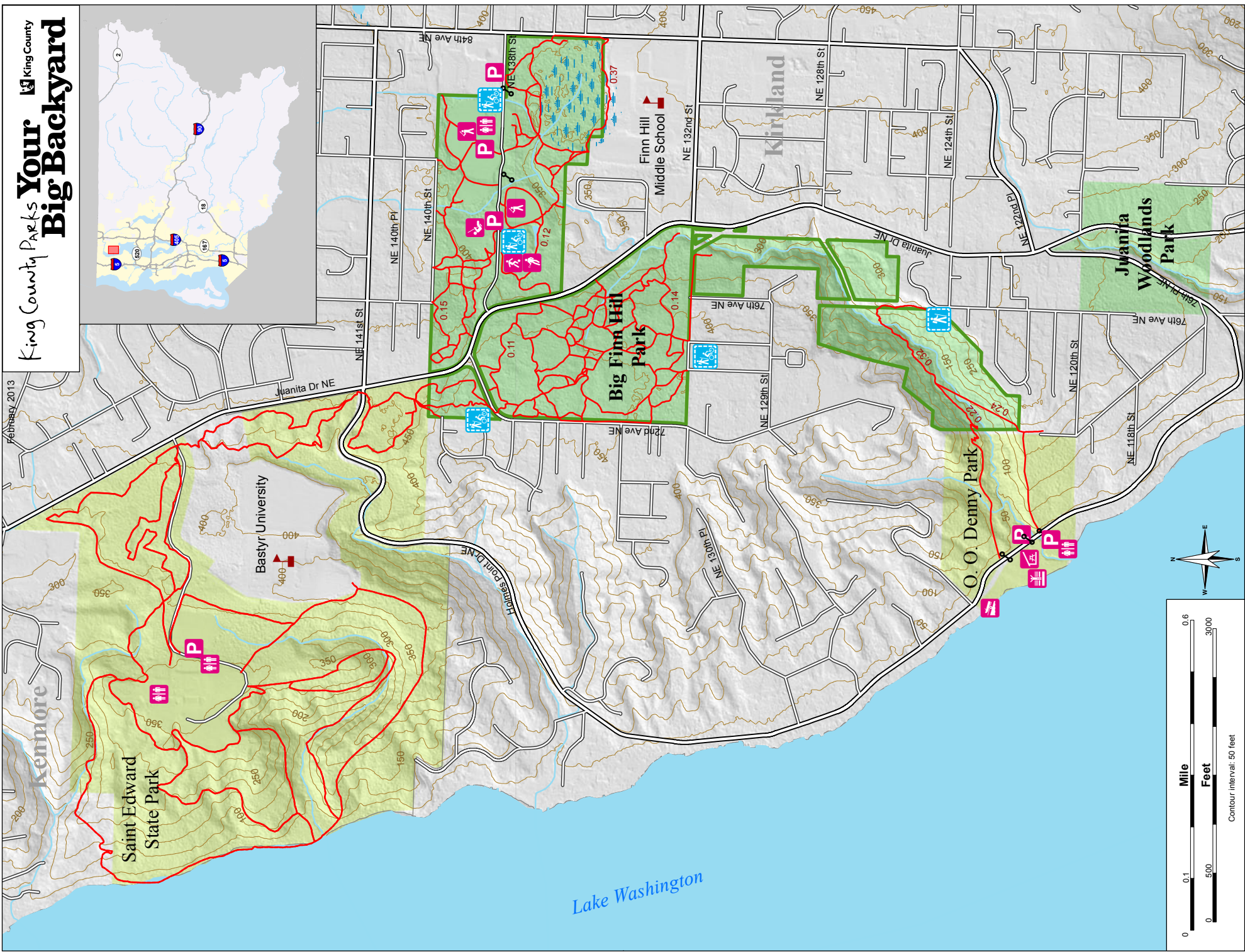
# Big Finn Hill

Welcome to King County Parks' Big Finn Hill Park

Big Finn Hill Park and the adjoining Saint Edward State Park provide more than 16 miles of trails for hiking and biking through a lush forest setting near Lake Washington. Mountain bikers have been coming here for years to sample a wide variety of twisty and looping trails that will test all skill levels. Whether walking or riding, Big Finn Hill offers a backcountry trail experience right in the city.

February 2013

# King County Parks Your Big Backyard



Contour interval: 50 feet